

ACTIVE CHILLED BEAMS

ACB30 (2 WAY)

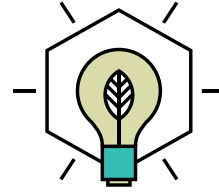
ACB35 (1 WAY)



DADANCO

feel the difference™

BUILT ON INNOVATION



THE CONCEALED Active Chilled Beams ACB30 and ACB35 are installed above the ceiling keeping a similar appearance to a conventional all air system. Dadanco Active Chilled Beams have been tested both in-house and independently at ETL Laboratories.

PRODUCT DATA AND PERFORMANCE

Primary Airflow 15-130 CFM

Dimensions ACB30 is 11.7 in height with 8.8 in width. ACB35 is 17 in height and 7.1 in width

Cooling Capacity 1,000-8000 BTUH

Primary air connection ACB30 connection on the side of the chassis. ACB35 connection centered on the top of the chassis

Sizes 2 to 8 foot lengths in 1ft increments

COMMON APPLICATIONS

The concealed Active Chilled Beams are suitable for use in applications where ceiling space is limited. ACB30/35 are installed above the ceiling and the supply air is delivered to the space via 6-12" wide linear diffuser.

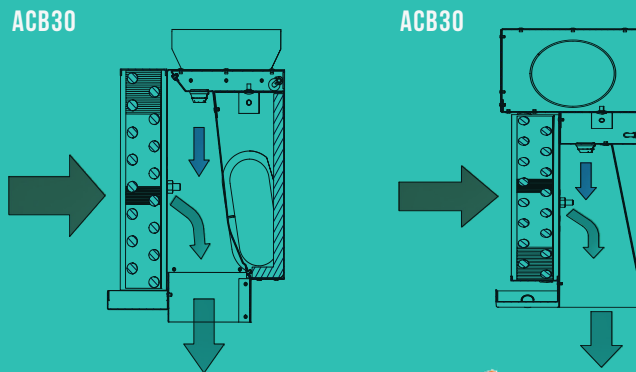




ACB 30/35

CONCEALED ACB MODELS (VERTICAL COILS AND DRAIN PANS)

These concealed units offer improved aesthetics for applications where ceiling space is limited. Installed above the ceiling, the supply air is delivered via a 6-12" wide linear diffuser with a similar appearance to a conventional all air system. The ACB30 unit has the primary air connection on the side of the chassis and an overall height of 12" while the ACB35 unit has the air connection centered on the top of the chassis.



PERFORMANCE CHARACTERISTICS

MODEL	SIZE		TYPICAL CAPACITY			SOUND LEVEL
	Width	Height	Cooling (BTUH)	Heating (BTUH)	Primary Airflow (CFM)	
ACB30	8.8"	11.7"	1,000 - 8,000	10,000	15 - 130	NC15-NC30
ACB35	7.1"	17"	1,000 - 8,000	10,000	15 - 130	NC15-NC30





The Luxton-Reed Center
47 Westfield Industrial Park Road
Westfield, Massachusetts 01085

(413) 564-5657
info@dadanco.com

 Dadanco

 DadancoHVAC

 Dadanco

WWW.DADANCO.COM

